



**LSQ SQUARE SERIES**  
LED SURFACE / SUSPENDED LUMINAIRE

# THE SPEED OF LIGHT, SQUARED.

## Outstanding Performance with an Architectural Flair

In spaces with high ceilings or exposed plenums, linear fixtures can be suspended to subtly define the ceiling plane and create a more intimate sense of space while providing excellent task and ambient lighting.

Cree's new LSQ Square Series is a sleek rectilinear luminaire with three precisely designed optic options that offer you the opportunity to prioritize maximum energy efficiency or superb colour rendering, all in an attractive form factor.



SEE VIDEO

**CREE** 

# LSQ SQUARE SERIES: A BETTER RUN FOR THE MONEY

The LSQ Square Series is a natural for surface/suspended lighting in open-ceiling designs, with sharp-edged lines that help create an imaginary ceiling plane below exposed ductwork and conduits, as well as delivered lumens that allow mounting heights up to 20 feet. The LSQ Square Series also offers new beauty end cap accessories that are light-tight to prevent seamy glare and preserve the blackout effect where there's no drop ceiling.

## THREE OPTIC CHOICES COVER ALL THE ANGLES

Three different optics, offering design flexibility to create unique environments with just one fixture.

### Lambertian Optic

- ▶ Frosted soft lens that creates low-glare, visually comfortable light for general applications.

### Aisle Lighter Optic

- ▶ Optically controlled light to enhance product shelves and walls in retail or walkways and hallways in school, healthcare and office applications.

### Asymmetric Wall Wash Optic

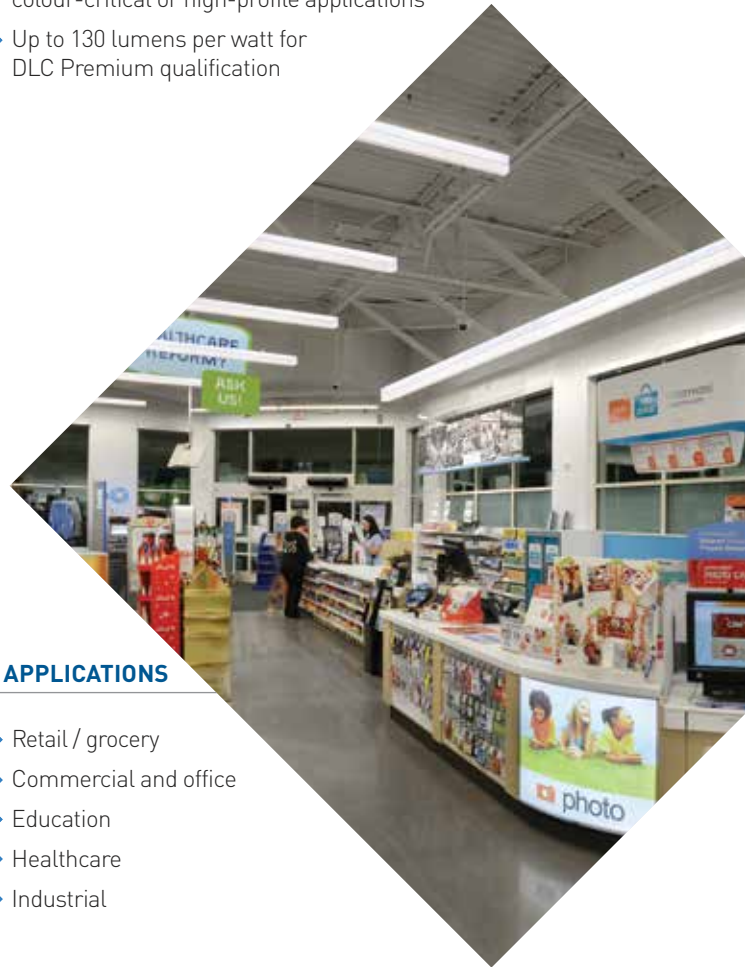
- ▶ Proprietary lens design that washes walls with smooth even light to enhance retail graphics, product displays, or provide perimeter lighting for any commercial indoor application.

## ENHANCED, REFINED LOOK WITH NEW BEAUTY CAPS

- ▶ Straight edge profile and sleek square lens design
- ▶ Long runs of crisp, uniform illumination
- ▶ End caps seal out light leaks on ends
- ▶ Full-length lens housing ensures no visually-distracting gaps

## PREMIUM PERFORMANCE OPENS UP NEW APPLICATIONS

- ▶ 4,000 to 10,000 lumens to address mounting heights up to 20 feet
- ▶ Delivers 80 CRI (LSQC) or better than 90 CRI (LSQ) for colour-critical or high-profile applications
- ▶ Up to 130 lumens per watt for DLC Premium qualification



## KEY APPLICATIONS

- ▶ Retail / grocery
- ▶ Commercial and office
- ▶ Education
- ▶ Healthcare
- ▶ Industrial

## INSTALLER-FRIENDLY FEATURES

- ▶ **Surface, pendant, suspended or cove mounting options** — Distinctly different looks for individual luminaires and continuous rows
- ▶ **Factory through-wire option** — Mate LSQ Square Series fixtures into continuous rows in just seconds
- ▶ **Easy and fast installation options:**
  - Single-point wiring connections
  - Extended wire harness
  - Lens assembly pull tabs
  - Safety cables



Visit [cree.com/canada](http://cree.com/canada) or contact a Cree lighting representative to learn more.

[CreeLightingCanada@cree.com](mailto:CreeLightingCanada@cree.com) | 800.473.1234

© 2019 Cree, Inc. All rights reserved. For informational purposes only. Not a warranty or specification. See [cree.com/canada/warranty](http://cree.com/canada/warranty) for warranty and specifications. Cree® and the Cree logo are registered trademarks of Cree Inc. CAT/SSHT-C126 Rev. Date: 03/08/19

