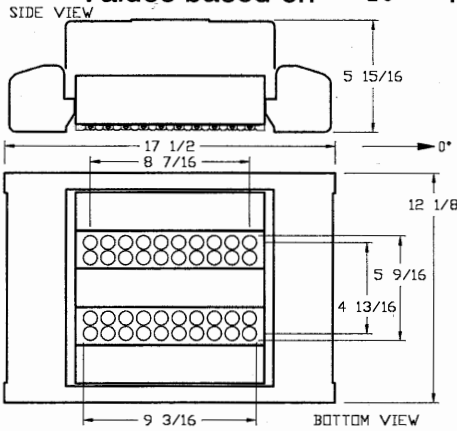


**itl boulder**  
THE LIGHT CENTER OF THE INDUSTRY SINCE 1955

INDEPENDENT TESTING LABORATORIES, INC.  
3386 LONGHORN ROAD, BOULDER, CO 80302 USA

PHONE: (303)442-1255 • FAX: (303)449-5274 • E-MAIL: itl@itlboulder.com • WEBSITE: www.itlboulder.com

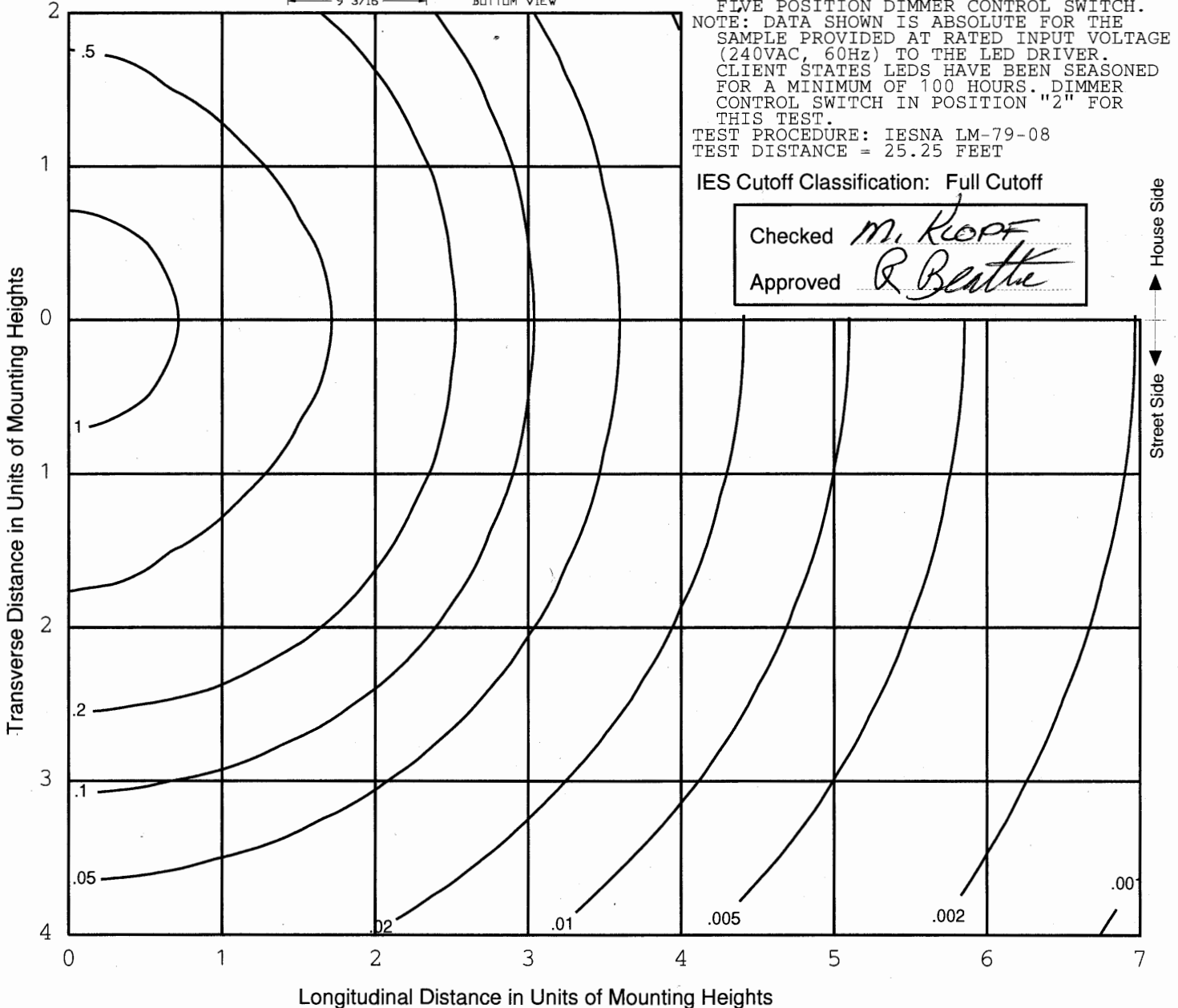
**ISOFOOTCANDLE LINES OF HORIZONTAL ILLUMINATION**  
Values based on 20 foot mounting height.



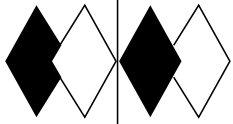
REPORT NUMBER: ITL64367  
DATE: 03/11/10  
PREPARED FOR: BETALED, A DIVISION OF RUUD LIGHTING  
CATALOG NUMBER: PKG-EDG-5M-\*\*-04-D-UL-WH-525 or BXPS0504D-UCW (525mA)  
LUMINAIRE: EXTRUDED WHITE PAINTED METAL HOUSING WITH CAST WHITE PAINTED METAL END CAPS, FABRICATED WIRE CAGE MOUNTING ASSEMBLY, TWO EXTRUDED FINNED METAL HEAT SINKS, EACH HEAT SINK CONTAINS ONE CIRCUIT BOARD WITH 20 LEDS, CAST WHITE PAINTED METAL TRIM PLATE, ONE CLEAR NON-INTEGRAL PLASTIC LENS BELOW EACH LED. THREE FORMED WHITE PAINTED SOLID METAL TRIM PLATES.  
LAMPS: FORTY WHITE LIGHT EMITTING DIODES (LEDS), VERTICAL BASE-UP POSITION.  
TOTAL INPUT WATTS = 70.3 AT 240.0 VOLTS  
LED DRIVER: BETA LED DPL-100BB A, WITH FIVE POSITION DIMMER CONTROL SWITCH.  
NOTE: DATA SHOWN IS ABSOLUTE FOR THE SAMPLE PROVIDED AT RATED INPUT VOLTAGE (240VAC, 60Hz) TO THE LED DRIVER. CLIENT STATES LEDS HAVE BEEN SEASONED FOR A MINIMUM OF 100 HOURS. DIMMER CONTROL SWITCH IN POSITION "2" FOR THIS TEST.  
TEST PROCEDURE: IESNA LM-79-08  
TEST DISTANCE = 25.25 FEET

IES Cutoff Classification: Full Cutoff

Checked *M. Kropf*  
Approved *R. Beattie*

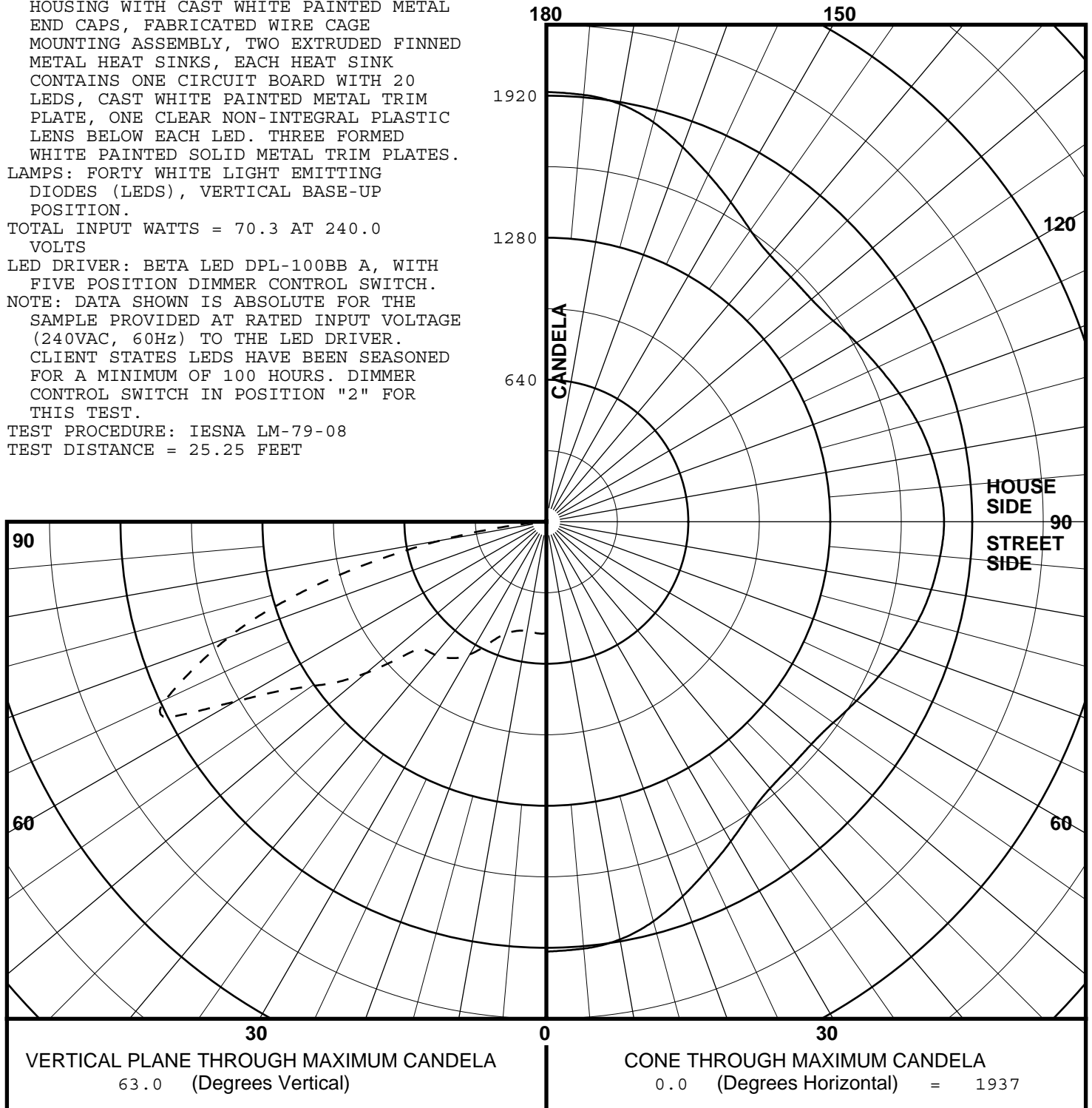


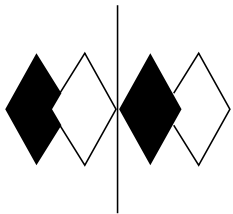
THIS REPORT IS BASED ON PUBLISHED INDUSTRY PROCEDURES. FIELD PERFORMANCE MAY DIFFER FROM LABORATORY PERFORMANCE.



REPORT NUMBER: ITL64367  
 DATE: 03/11/10  
 PREPARED FOR: BETALED, A DIVISION OF RUUD LIGHTING  
 CATALOG NUMBER: PKG-EDG-5M-\*\*-04-D-UL-WH-525 or BXPS0504D-UCW (525mA)  
 LUMINAIRE: EXTRUDED WHITE PAINTED METAL HOUSING WITH CAST WHITE PAINTED METAL END CAPS, FABRICATED WIRE CAGE MOUNTING ASSEMBLY, TWO EXTRUDED FINNED METAL HEAT SINKS, EACH HEAT SINK CONTAINS ONE CIRCUIT BOARD WITH 20 LEDES, CAST WHITE PAINTED METAL TRIM PLATE, ONE CLEAR NON-INTEGRAL PLASTIC LENS BELOW EACH LED. THREE FORMED WHITE PAINTED SOLID METAL TRIM PLATES.  
 LAMPS: FORTY WHITE LIGHT EMITTING DIODES (LEDES), VERTICAL BASE-UP POSITION.  
 TOTAL INPUT WATTS = 70.3 AT 240.0 VOLTS  
 LED DRIVER: BETA LED DPL-100BB A, WITH FIVE POSITION DIMMER CONTROL SWITCH.  
 NOTE: DATA SHOWN IS ABSOLUTE FOR THE SAMPLE PROVIDED AT RATED INPUT VOLTAGE (240VAC, 60Hz) TO THE LED DRIVER. CLIENT STATES LEDES HAVE BEEN SEASONED FOR A MINIMUM OF 100 HOURS. DIMMER CONTROL SWITCH IN POSITION "2" FOR THIS TEST.  
 TEST PROCEDURE: IESNA LM-79-08  
 TEST DISTANCE = 25.25 FEET

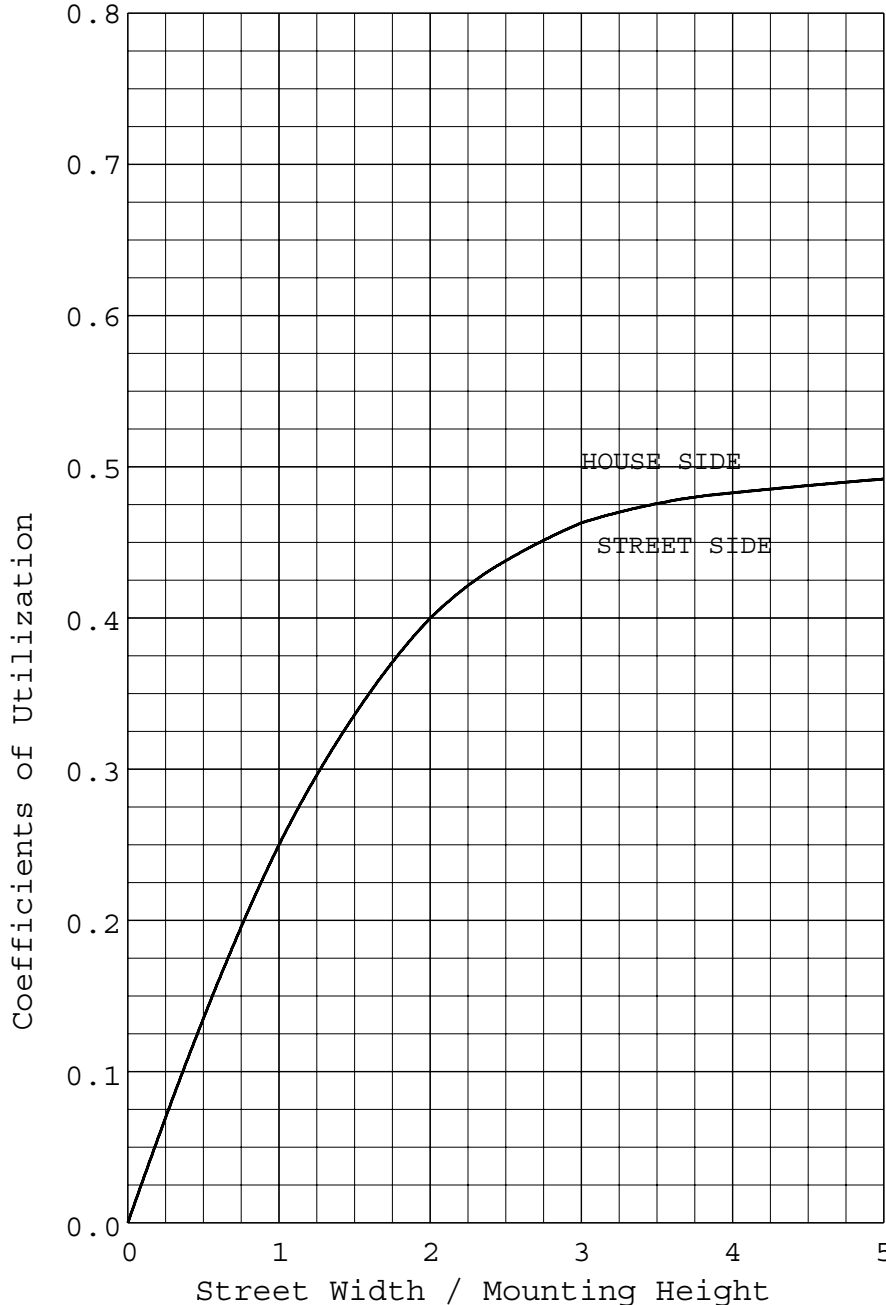
MAXIMUM PLANE AND MAXIMUM CONE PLOTS OF CANDELA





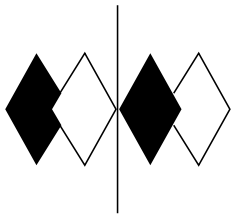
REPORT NUMBER: ITL64367  
 DATE: 03/11/10  
 PREPARED FOR: BETALED, A DIVISION OF RUUD LIGHTING

COEFFICIENTS OF UTILIZATION AND FLUX DISTRIBUTION



	LUMENS	PERCENT OF FIXTURE
DOWNWARD STREET SIDE	2851.	50.0
DOWNWARD HOUSE SIDE	2851.	50.0
DOWNWARD TOTAL	5701.	100.0
UPWARD STREET SIDE	0.	0.0
UPWARD HOUSE SIDE	0.	0.0
UPWARD TOTAL	0.	0.0
TOTAL FLUX	5701.	100.0
EFFICACY = 81.1 Lm/W		

ALL CANDELA AND LUMENS IN THIS REPORT ARE BASED ON ABSOLUTE PHOTOMETRY. THE COEFFICIENT OF UTILIZATION VALUES ARE BASED ON THE TOTAL ABSOLUTE LUMEN OUTPUT OF THIS LUMINAIRE SAMPLE.



**itl boulder**  
THE LIGHT CENTER OF THE INDUSTRY SINCE 1955

INDEPENDENT TESTING LABORATORIES, INC.  
 3386 LONGHORN ROAD, BOULDER, CO 80302 USA

PHONE: (303)442-1255 • FAX: (303)449-5274 • E-MAIL: itl@itlboulder.com • WEBSITE: www.itlboulder.com

REPORT NUMBER: ITL64367  
 DATE: 03/11/10  
 PREPARED FOR: BETALED, A DIVISION OF RUUD LIGHTING

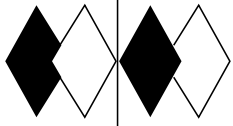
FLUX DISTRIBUTION BY SOLID ANGLE  
 (PER IESNA TM-15-07, LUMINAIRE CLASSIFICATION  
 SYSTEM FOR OUTDOOR LUMINAIRES)

	LUMENS	PERCENT OF FIXTURE
FORWARD LIGHT	2851.	50.0
FL ( 0- 30)		4.2
FM ( 30- 60)		20.6
FH ( 60- 80)		24.0
FVH( 80- 90)		1.2
BACK LIGHT	2851.	50.0
BL ( 0- 30)		4.2
BM ( 30- 60)		20.6
BH ( 60- 80)		24.0
BVH( 80- 90)		1.2
UPLIGHT	0.	0.0
UL ( 90-100)		0.0
UH (100-180)		0.0
TRAPPED LIGHT	0.	0.0
TOTAL FLUX	5701.	100.0

BACKLIGHT, UPLIGHT, AND GLARE (BUG) RATINGS  
 (PER ADDENDUM A FOR IESNA TM-15-07)

BUG RATING: B3 U1 G1	FIRST DETERMINING SECONDARY SOLID ANGLE*	LUMENS
BACKLIGHT RATING: B3	BH	1368.3
UPLIGHT RATING : U1	FVH	69.5
GLARE RATING : G1	FVH	69.5

\* NOTE: OTHER DETERMINING SOLID ANGLES MAY FALL INTO THIS SAME CATEGORY. ONLY THE FIRST DETERMINING ANGLES FROM THE TABLES A1-A3 IN THE ADDENDUM ARE SHOWN.



**itl boulder**  
THE LIGHT CENTER OF THE INDUSTRY SINCE 1955

INDEPENDENT TESTING LABORATORIES, INC.  
 3386 LONGHORN ROAD, BOULDER, CO 80302 USA

PHONE: (303)442-1255 • FAX: (303)449-5274 • E-MAIL: itl@itlboulder.com • WEBSITE: www.itlboulder.com

REPORT NUMBER: ITL64367

DATE: 03/11/10

PREPARED FOR: BETALED, A DIVISION OF RUUD LIGHTING

CANDELA TABULATION

	LATERAL ANGLE										
	0.0	5.0	15.0	25.0	35.0	45.0	55.0	65.0	75.0	85.0	90.0
180.0	0.	0.	0.	0.	0.	0.	0.	0.	0.	0.	0.
175.0	0.	0.	0.	0.	0.	0.	0.	0.	0.	0.	0.
165.0	0.	0.	0.	0.	0.	0.	0.	0.	0.	0.	0.
155.0	0.	0.	0.	0.	0.	0.	0.	0.	0.	0.	0.
145.0	0.	0.	0.	0.	0.	0.	0.	0.	0.	0.	0.
135.0	0.	0.	0.	0.	0.	0.	0.	0.	0.	0.	0.
125.0	0.	0.	0.	0.	0.	0.	0.	0.	0.	0.	0.
115.0	0.	0.	0.	0.	0.	0.	0.	0.	0.	0.	0.
105.0	0.	0.	0.	0.	0.	0.	0.	0.	0.	0.	0.
95.0	0.	0.	0.	0.	0.	0.	0.	0.	0.	0.	0.
92.5	0.	0.	0.	0.	0.	0.	0.	0.	0.	0.	0.
90.0	0.	0.	0.	0.	0.	0.	0.	0.	0.	0.	0.
87.5	13.	12.	12.	13.	11.	10.	13.	14.	16.	16.	16.
85.0	70.	69.	68.	65.	46.	43.	64.	67.	69.	69.	70.
V 82.5	246.	244.	237.	225.	184.	174.	208.	213.	217.	219.	218.
E 80.0	484.	481.	473.	461.	424.	414.	433.	439.	443.	444.	444.
R 77.5	750.	750.	745.	737.	719.	710.	713.	710.	707.	705.	702.
T 75.0	1030.	1029.	1029.	1036.	1042.	1037.	1026.	1003.	986.	977.	975.
I 72.5	1300.	1299.	1308.	1332.	1365.	1385.	1349.	1294.	1257.	1238.	1235.
C 70.0	1526.	1526.	1538.	1575.	1633.	1662.	1612.	1542.	1492.	1468.	1466.
A 67.5	1714.	1714.	1733.	1771.	1783.	1752.	1733.	1720.	1688.	1666.	1666.
L 65.0	1894.	1893.	1885.	1831.	1725.	1657.	1674.	1736.	1792.	1812.	1815.
63.0 <<	1937.	1931.	1864.	1727.	1604.	1559.	1579.	1652.	1733.	1782.	1793.
A 62.5	1903.	1894.	1801.	1658.	1555.	1521.	1536.	1604.	1687.	1738.	1745.
N 60.0	1621.	1614.	1558.	1482.	1442.	1427.	1433.	1472.	1528.	1569.	1574.
G 57.5	1417.	1414.	1401.	1380.	1361.	1358.	1363.	1385.	1412.	1427.	1428.
L 55.0	1291.	1291.	1289.	1288.	1291.	1297.	1296.	1305.	1317.	1320.	1320.
E 52.5	1187.	1186.	1193.	1204.	1221.	1231.	1227.	1224.	1223.	1218.	1218.
50.0	1061.	1062.	1083.	1115.	1145.	1159.	1150.	1135.	1115.	1102.	1100.
47.5	921.	922.	943.	987.	1032.	1052.	1039.	1008.	976.	957.	954.
45.0	811.	814.	839.	878.	912.	931.	917.	890.	862.	847.	845.
42.5	791.	791.	795.	808.	828.	841.	830.	813.	804.	803.	802.
40.0	782.	783.	783.	782.	780.	782.	781.	783.	787.	788.	788.
37.5	768.	768.	768.	766.	763.	762.	761.	764.	768.	770.	770.
35.0	750.	749.	748.	744.	740.	738.	738.	741.	746.	749.	749.
30.0	690.	689.	688.	684.	680.	679.	680.	683.	685.	688.	688.
25.0	602.	602.	604.	608.	611.	613.	613.	610.	607.	607.	607.
20.0	537.	537.	540.	545.	548.	551.	549.	545.	540.	538.	537.
15.0	509.	509.	510.	512.	514.	515.	514.	512.	510.	509.	509.
10.0	502.	502.	503.	504.	504.	505.	504.	503.	503.	502.	502.
5.0	504.	504.	504.	505.	504.	505.	504.	504.	505.	504.	504.
0.0	504.	504.	504.	504.	504.	504.	504.	504.	504.	504.	504.

||  
 PLANE OF MAXIMUM CANDELA

CONE OF MAXIMUM CANDELA