

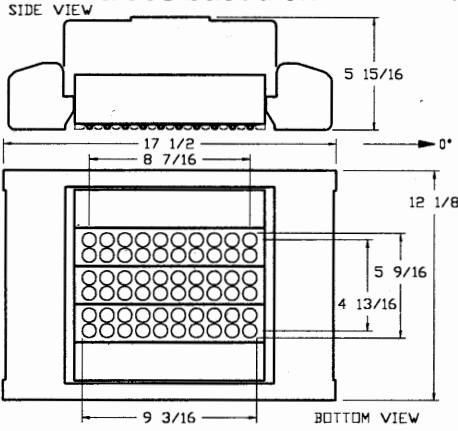
itl boulder
THE LIGHT CENTER OF THE INDUSTRY SINCE 1955

INDEPENDENT TESTING LABORATORIES, INC.
3386 LONGHORN ROAD, BOULDER, CO 80302 USA

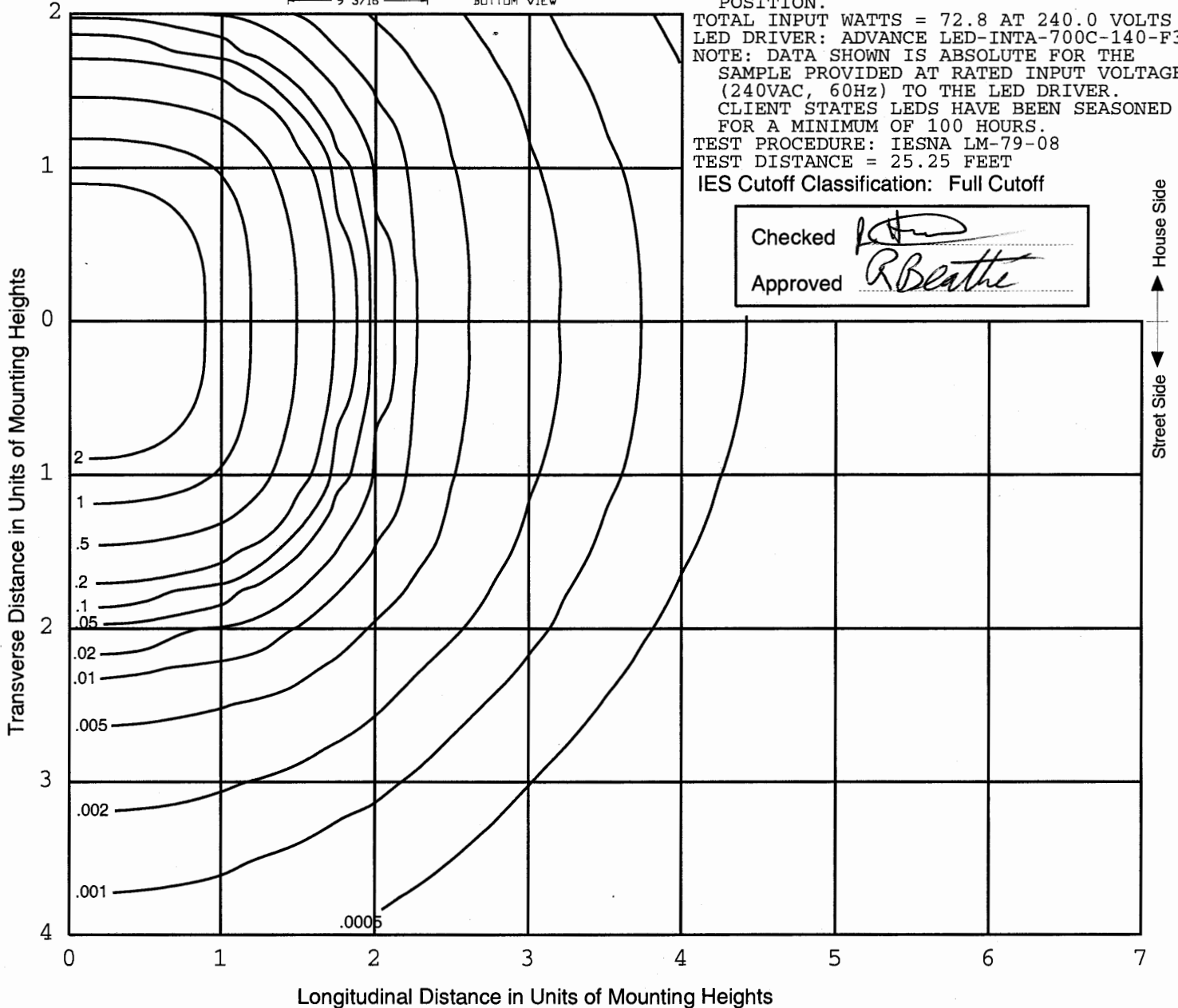
PHONE: (303)442-1255 • FAX: (303)449-5274 • E-MAIL: itl@itlboulder.com • WEBSITE: www.itlboulder.com

ISOFOOTCANDLE LINES OF HORIZONTAL ILLUMINATION

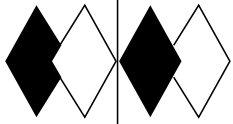
Values based on 20 foot mounting height.



REPORT NUMBER: ITL64194
DATE: 02/10/10
PREPARED FOR: BETALED, A DIVISION OF RUUD LIGHTING
CATALOG NUMBER: PKG-EDG-PS-**-06-C-UL or BXPS0A06C-UW (350mA)
LUMINAIRE: EXTRUDED WHITE PAINTED METAL HOUSING WITH CAST WHITE PAINTED METAL END CAPS, FABRICATED WIRE CAGE MOUNTING ASSEMBLY, THREE EXTRUDED FINNED METAL HEAT SINKS, EACH HEAT SINK CONTAINS ONE CIRCUIT BOARD WITH 20 LEDS, CAST WHITE PAINTED METAL TRIM PLATE, ONE CLEAR NON-INTEGRAL PLASTIC LENS BELOW EACH LED. TWO FORMED WHITE PAINTED SOLID METAL TRIM PLATES.
LAMPS: SIXTY WHITE LIGHT EMITTING DIODES (LEDS), VERTICAL BASE-UP POSITION.
TOTAL INPUT WATTS = 72.8 AT 240.0 VOLTS
LED DRIVER: ADVANCE LED-INTA-700C-140-F30
NOTE: DATA SHOWN IS ABSOLUTE FOR THE SAMPLE PROVIDED AT RATED INPUT VOLTAGE (240VAC, 60Hz) TO THE LED DRIVER.
CLIENT STATES LEDS HAVE BEEN SEASONED FOR A MINIMUM OF 100 HOURS.
TEST PROCEDURE: IESNA LM-79-08
TEST DISTANCE = 25.25 FEET
IES Cutoff Classification: Full Cutoff

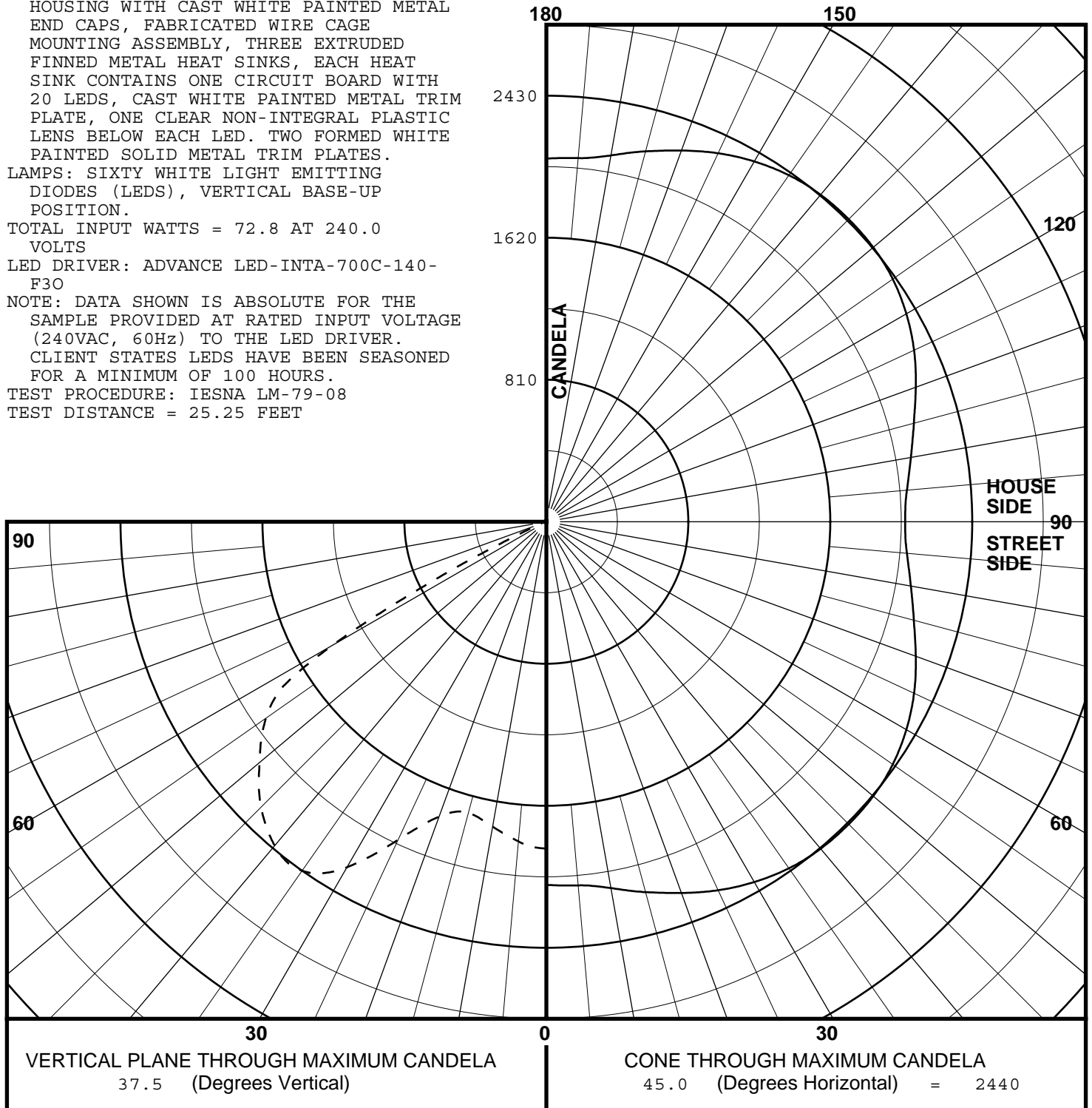


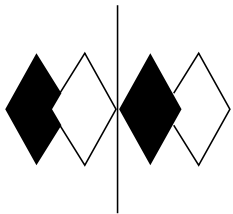
Checked *[Signature]*
Approved *R. Beattie*



REPORT NUMBER: ITL64194
 DATE: 02/10/10
 PREPARED FOR: BETALED, A DIVISION OF
 RUUD LIGHTING
 CATALOG NUMBER: PKG-EDG-PS-**-06-C-UL
 or BXPS0A06C-UW (350mA)
 LUMINAIRE: EXTRUDED WHITE PAINTED METAL
 HOUSING WITH CAST WHITE PAINTED METAL
 END CAPS, FABRICATED WIRE CAGE
 MOUNTING ASSEMBLY, THREE EXTRUDED
 FINNED METAL HEAT SINKS, EACH HEAT
 SINK CONTAINS ONE CIRCUIT BOARD WITH
 20 LEDS, CAST WHITE PAINTED METAL TRIM
 PLATE, ONE CLEAR NON-INTEGRAL PLASTIC
 LENS BELOW EACH LED. TWO FORMED WHITE
 PAINTED SOLID METAL TRIM PLATES.
 LAMPS: SIXTY WHITE LIGHT EMITTING
 DIODES (LEDS), VERTICAL BASE-UP
 POSITION.
 TOTAL INPUT WATTS = 72.8 AT 240.0
 VOLTS
 LED DRIVER: ADVANCE LED-INTA-700C-140-
 F30
 NOTE: DATA SHOWN IS ABSOLUTE FOR THE
 SAMPLE PROVIDED AT RATED INPUT VOLTAGE
 (240VAC, 60Hz) TO THE LED DRIVER.
 CLIENT STATES LEDS HAVE BEEN SEASONED
 FOR A MINIMUM OF 100 HOURS.
 TEST PROCEDURE: IESNA LM-79-08
 TEST DISTANCE = 25.25 FEET

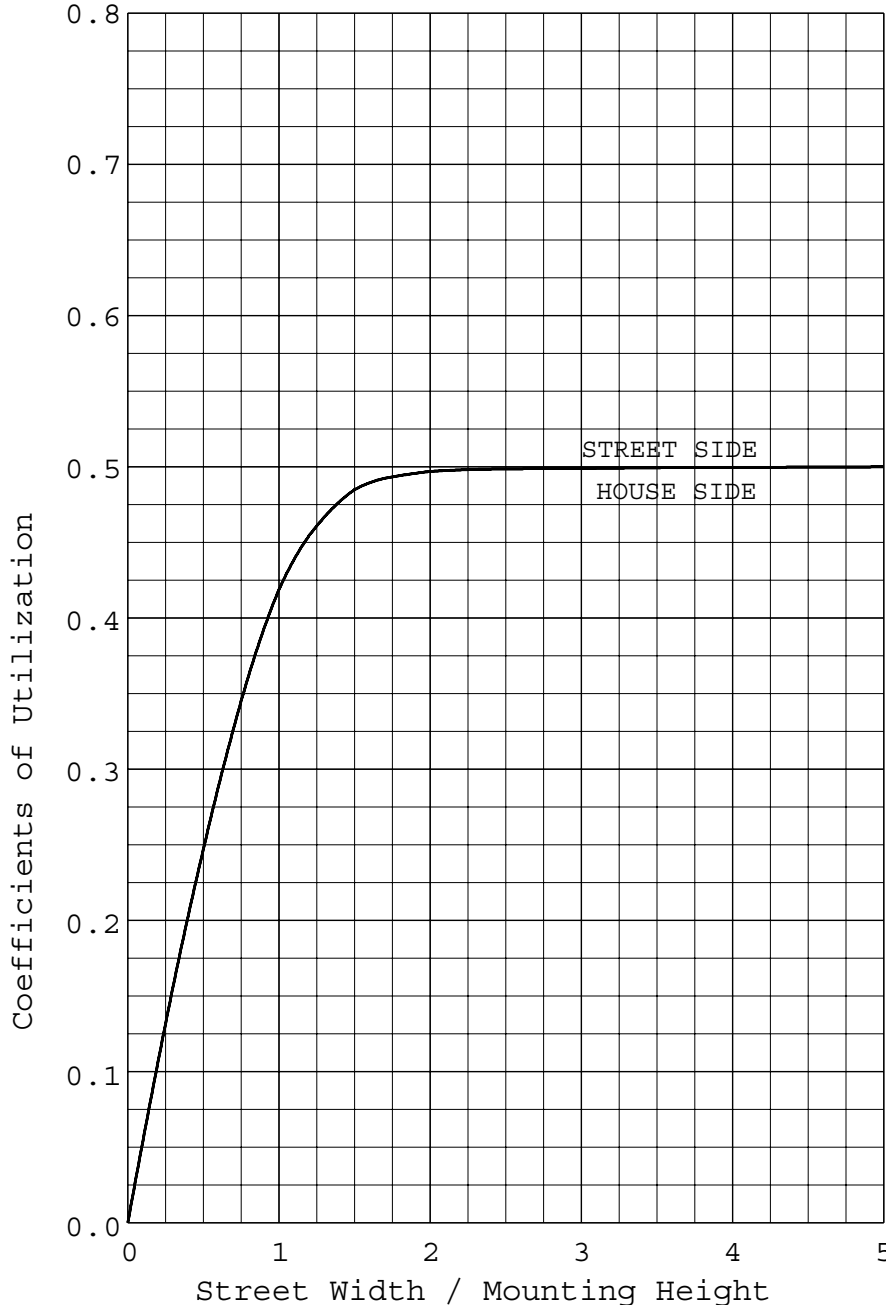
MAXIMUM PLANE AND MAXIMUM CONE PLOTS OF CANDELA





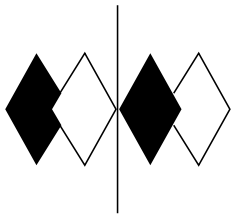
REPORT NUMBER: ITL64194
 DATE: 02/10/10
 PREPARED FOR: BETALED, A DIVISION OF RUUD LIGHTING

COEFFICIENTS OF UTILIZATION AND FLUX DISTRIBUTION



	LUMENS	PERCENT OF FIXTURE
DOWNWARD STREET SIDE	3074.	50.0
DOWNWARD HOUSE SIDE	3074.	50.0
DOWNWARD TOTAL	6148.	100.0
UPWARD STREET SIDE	0.	0.0
UPWARD HOUSE SIDE	0.	0.0
UPWARD TOTAL	0.	0.0
TOTAL FLUX	6148.	100.0
EFFICACY = 84.5 Lm/W		

ALL CANDELA AND LUMENS IN THIS REPORT ARE BASED ON ABSOLUTE PHOTOMETRY. THE COEFFICIENT OF UTILIZATION VALUES ARE BASED ON THE TOTAL ABSOLUTE LUMEN OUTPUT OF THIS LUMINAIRE SAMPLE.



itl boulder
THE LIGHT CENTER OF THE INDUSTRY SINCE 1955

INDEPENDENT TESTING LABORATORIES, INC.
 3386 LONGHORN ROAD, BOULDER, CO 80302 USA

PHONE: (303)442-1255 • FAX: (303)449-5274 • E-MAIL: itl@itlboulder.com • WEBSITE: www.itlboulder.com

REPORT NUMBER: ITL64194
 DATE: 02/10/10
 PREPARED FOR: BETALED, A DIVISION OF RUUD LIGHTING

FLUX DISTRIBUTION BY SOLID ANGLE
 (PER IESNA TM-15-07, LUMINAIRE CLASSIFICATION
 SYSTEM FOR OUTDOOR LUMINAIRES)

	LUMENS	PERCENT OF FIXTURE
FORWARD LIGHT	3074.	50.0
FL (0- 30)		13.3
FM (30- 60)		34.4
FH (60- 80)		2.3
FVH(80- 90)		0.0
BACK LIGHT	3074.	50.0
BL (0- 30)		13.3
BM (30- 60)		34.4
BH (60- 80)		2.3
BVH(80- 90)		0.0
UPLIGHT	0.	0.0
UL (90-100)		0.0
UH (100-180)		0.0
TRAPPED LIGHT	0.	0.0
TOTAL FLUX	6148.	100.0

BACKLIGHT, UPLIGHT, AND GLARE (BUG) RATINGS
 (PER ADDENDUM A FOR IESNA TM-15-07)

BUG RATING: B2 U0 G0	FIRST DETERMINING SECONDARY SOLID ANGLE*	LUMENS
BACKLIGHT RATING: B2	BM	2115.8
UPLIGHT RATING : U0	UH	0.0
GLARE RATING : G0	FVH	2.5

* NOTE: OTHER DETERMINING SOLID ANGLES MAY FALL INTO THIS SAME CATEGORY. ONLY THE FIRST DETERMINING ANGLES FROM THE TABLES A1-A3 IN THE ADDENDUM ARE SHOWN.

